

# TABLE OF CONTENTS

---

<i>Overview</i>	1
<i>System Requirements</i>	2
<i>Fax Broadcast Suggestions</i>	3
<i>Beginner Guide</i>	4
Step 1: Install Modem	5
Step 2: Setup Wizard and Options	6
Step 3: Create New Fax For Broadcasting	8
Step 4: Manage Recipient List	9
Step 5: Broadcast Fax	10
<i>Frequently Asked Questions</i>	11
How to import recipients	12
How to install multiple fax modems?	13
How can I improve fax reliability?	15
How to increase the fax quality(especially faxing PDF files)?	16
How to register the Joyfax Broadcast?	17
<i>Registering Joyfax Broadcast</i>	17
<i>License Agreement</i>	19

---

## What is Joyfax Broadcast

A personalized faxing software can reach thousands of people with no limit. This easy to use product is your ideal communication tool for fax marketing, customer communication, event notification, newsletter publishing and more. Fax broadcast job can be set up to run at specific times or in the background.

### Features

- Delivers fax broadcast job quickly.  
Joyfax Broadcast is fully scalable from a single port/line up to 36 ports/lines.
- Import Recipients from CSV files  
Fax Broadcast comes complete with import wizards to facilitate recipient entries. There is NO LIMIT on the number of recipient.
- Personalize your faxes with custom fax headers and cover pages  
Fax Broadcast allows you to customize your fax messages to match the needs of your recipients. Personalize sender names, recipient names, images/logos, entire cover pages, customized fax headers and more...
- Automatically resend undeliverable faxes  
Once the fax broadcast has finished, the Joyfax Broadcast can automatically resend all of your undeliverable faxes.
- Fax reports  
Users can create instant reports on successful and failed fax broadcast jobs.
- Convert any printable file into a faxable format.
- Open and convert any Microsoft Office or PDF file directly from the Joyfax Broadcast application.
- Intelligent long distance dialling/local area code detection.

## System Requirements

To guarantee stable operation, the following minimum requirements should be met:

### Requirements for Joyfax Broadcast Installation:

- 300 MHz or higher Pentium-compatible CPU
- Working Memory 256 MB or more
- Hard disk with at least 100 MB available
- Video display capable of 16-bit color and 800 x 600 resolution
- Fax modems/boards that support fax class 1, 2 or 2.0
- .NET framework 2.0
- Microsoft Windows 2000/XP/2003/Vista/2008/7

## Fax broadcast Suggestions

Suggestions to help you run a successful fax broadcasting campaign:

- Make sure your **Font Size** is 11 or larger to make it easier to read;
- **Large Text** is a great to help emphasize a point, don' t use bold,increase the font size instead;
- Use a plain **Open Font** like Arial rather than a tight or scripted font, they come out much better on faxes;
- Keep your message short and straight forward;
- Make sure you have included your **correct details telephone, fax** etc – how do you wish to be contacted?
- Only use **black and white**. Particularly when creating your PDF document, make sure its in black and white not colour (although the page may appear as black in white it may be saved as colour); If you need to use any graphics or logos, make sure they are in black and white not colour or greyscale;
- Make sure the **page size is A4**;
- Try and **avoid tick boxes and/or thin black lines** for people to write on, they generally look very ordinary;
- Maybe you could have a **fax back or order form at the bottom of your page**. This would encourage people to be respond, as will a special offer or discount;
- We recommend the following **multi-modem cards**: Digi Acceleport Ras 4/8 Port Modem cards, Mainpine IQ Express 2/4/8 Port Modem, Multi-Tech MultiModem ISI Multiport Analog Modem and Comtrol RocketModem IV, and please refer to [How to install multiple fax modems?](#)
- **TEST!!** – The most important step, send your document to your own fax machine and see how it comes out.

## Beginner Guide

- [Install Modems](#)
- [Configure Joyfax Broadcast](#)
- [Create New Fax For Broadcasting](#)
- [Manage Recipient List](#)
- [Broadcast Fax](#)

## Install Modems

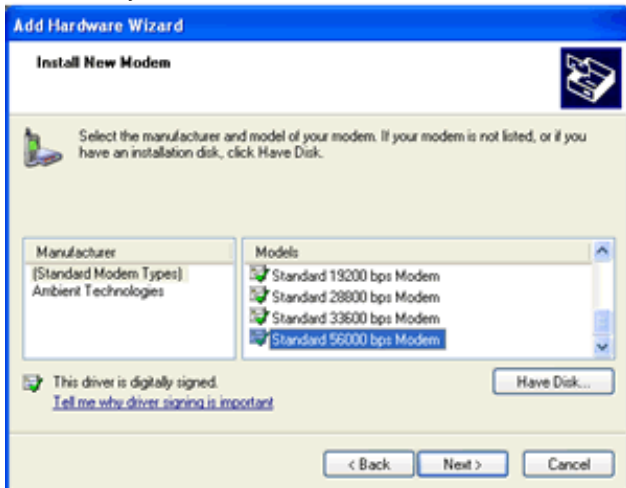
1. To prepare the Joyfax Broadcast to broadcast faxes, you must connect the modem to the computer.



2. Connect your computer's modem to your phone line using a standard phone cable. Plug in the modem's power supply if you are installing an extended modem.



3. Install the modem drivers.  
Turn on your computer. After the New Hardware Wizard detects your modem, insert the Installation CD-ROM into your CD-ROM drive. Follow the onscreen prompts to complete the installation



## Setup Wizard and Options

The first time you launch the Joyfax Broadcast, a setup wizard will start, helping you customize the Company Informations, Area Code and Fax Devices. You can change the settings in anytime by clicking the **Options** button on toolbar. The settings dialog box has two tabs:

- **General** tab contains the company informations and area code
- **Fax Devices** tab allows to configure the fax devices

### General Tab

**Options**

General Fax Devices

**Company Information**

Company: JoyHong Software

Full name: Dr. King TSID: WWW.JOYFAX.COM

Phone Number: (866) 654-4780 Fax Number: (866) 654-4781

**Area Code**

Country or region: +1

Area(or city) code: 886

National call prefix: 1

International call prefix: 011

Auto. remove area code for local calls

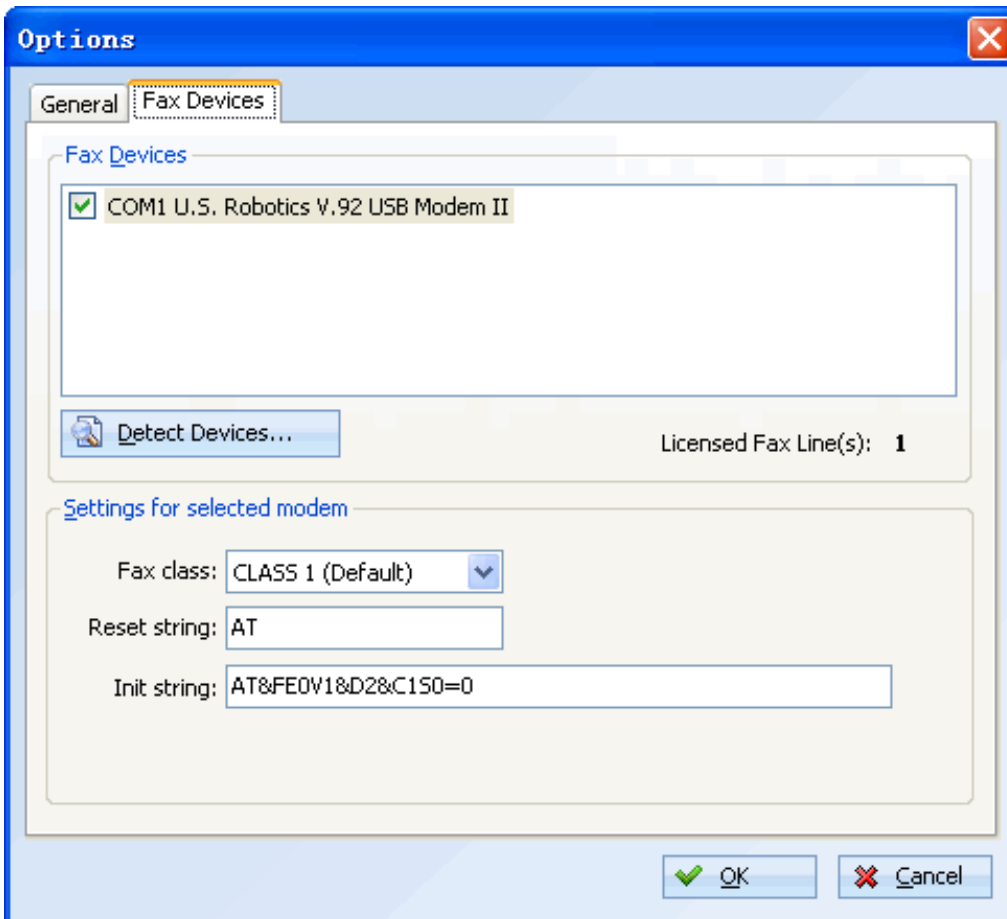
Show Fax Broadcasting Wizard while creating a new project

OK Cancel

General tab contains the following items:

- **Company informations:** Sender's information will be used in the cover page
- **Area code:** Specifies the country code, area code, and specific dialing requirements for the place you are dialing from. It is used to analyze telephone numbers and determine the correct sequence of numbers to dial.
- **Show Fax Broadcasting wizard while creating a new project**

### Fax Devices Tab



**Fax Devices** tab contains the following items:

- **Fax Devices:** Allows you to choose a modem to configure settings
- **Detect Devices:** Click this button to automatically detect all connected modems
- **Fax Class:** Use Class 1 unless your modem does not support it. Class 1 has been in existence much longer, is supported by most fax machines and enjoys the most consistent implementation across fax devices in use today. The selection of fax class does not, in any way, affect the transmission speed.
- **Reset String:** Specifies the reset command to reset the modem after a fax transmission. Common reset commands are:
  1. ATZ
  2. AT&F
  3. AT&F0
- **Init string:** Specifies the initialization string to the modem. If don't know what it is, leave it blank please.



## Create New Fax Broadcasting Project

This wizard allows you to specify the fax contents and who to fax:

- In Joyfax Broadcast, click **New Project**, and then click **Fax Wizard** button on toolbar if necessary;
- The Fax Broadcasting Wizard will begin, click **Next**;
- Click on the recipients grid to add a recipient, or click **Import...** button to import recipients from a csv file, click **Next**;
  - **Company**: Recipient's company on cover page
  - **Note**: Note on cover page
- Click Append button to add files(Can be Word, Excel, Powerpoint, Pdf, RTF, jpg, png, tif and txt files) to fax, click **Next**;
- Choose a cover page if you want, click **Advanced...** button to set up the **Fax Header** and **Print Quality**; Click Preview button to to see a full-screen preview of the fax file; click **Next**;
- Specify the sending time and attempting settings, click **Next**;
- The software will generate the fax automatically for broadcasting, click **Finish** to close the wizard.

## Manage Recipient List

### To edit a recipient:

- In the recipient list, right click a recipient to pop up the context menu;
- Select **Edit**, the **Recipient Information** will be displayed, make all required changes;
- Click **OK** to save

### To delete a recipient:

- In the recipient list, right click a recipient to pop up the context menu;
- Select **Delete**, you will be asked to confirm the action. If you are sure, click **Yes**.

### To import recipients:

- See [How to import recipients](#)

### To export recipients:

- On the **Tools** menu, click **Export Recipient...**
- In the **Save as** dialog box, specify an output CSV filename, click **Save**

## Broadcast Fax

Now, you may easily click the Start button on toolbar to begin sending fax.

**BUT, it's highly recommended to send your document to your own fax machine and see how it comes out.**

- In Joyfax Broadcast windows, press **Ctrl + A** to select all recipients;
- Right-click a recipient to pop up the context menu, select **Suspend**;
- Right-click the first recipient to pop up the context menu, and select **Edit**, change the **Recipient fax number** to your own fax machine's fax number(NOT the Joyfax Broadcast's), click **OK** to save.
- Right-click the first recipient to pop up the context menu again, and select **Resume**, and click **Start** button on toolbar;
- Check the fax you received from the Joyfax Broadcast whether correct or not?
- Change back the first recipient's fax number, press **Ctrl + A**, right-click, select **Resume**, and click **Start** button for fax broadcasting.

## Frequently Asked Questions

- [How to import recipients?](#)
- [How to install multiple fax modems?](#)
- [How can I improve fax reliability?](#)
- [How to increase the fax quality\(especially the PDF files\)?](#)
- [How to register the Joyfax Broadcast?](#)

## How to import recipients

Importing from a CSV file is a two step process. First, you need to prepare and verify your CSV file. Next, simply choose your import file to perform the import.

### 1. Preparing your CSV file

Please ensure that your CSV is a valid CSV format. A good way to check is to import your file into Microsoft Excel and see if the data is as expected. This is also a good opportunity to do any massaging of the data, if you wish. The CSV file must contain a heading row. For example, here is a valid file with a single record:

```
Fullname, Fax, Company, Note
Sammy,(866) 654-6545, Recipient's company, Memo on cover page
```

[Click here](#) to download the sample file(contacts\_demo.csv)...

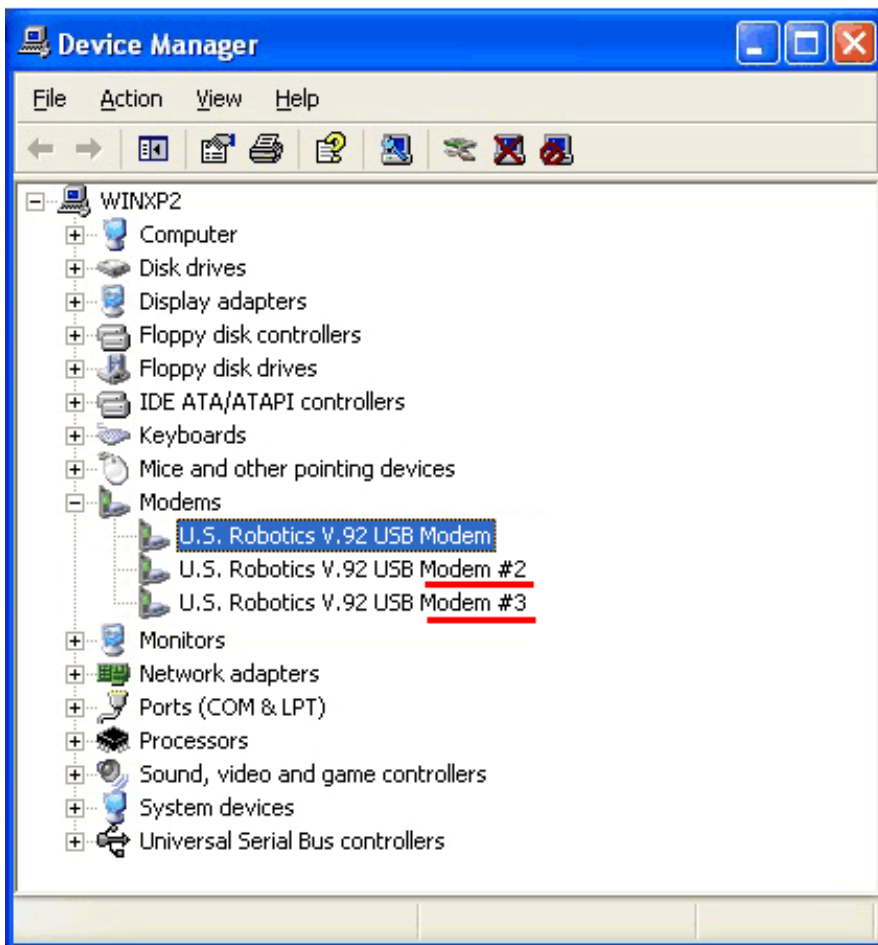
### 2.Importing the CSV file

- On **Tools** menu, click **Import contacts...**
- Locate the CSV file you want to import, press **Enter**
- The **Import Recipients** dialog box will be displayed, and give you statistics on how recipients were imported, then click **Next** button to continue
- At last, click **Next** button to close the dialog box

## How to install multiple fax modems?

Though we recommend to avoid using multiple low-cost fax modems for faxing, but we get asked this question a lot. Here is a simple step by step guide shows you how to install **multiple U.S. Robotics V.92 USB 56K USB Fax modems** on Windows XP:

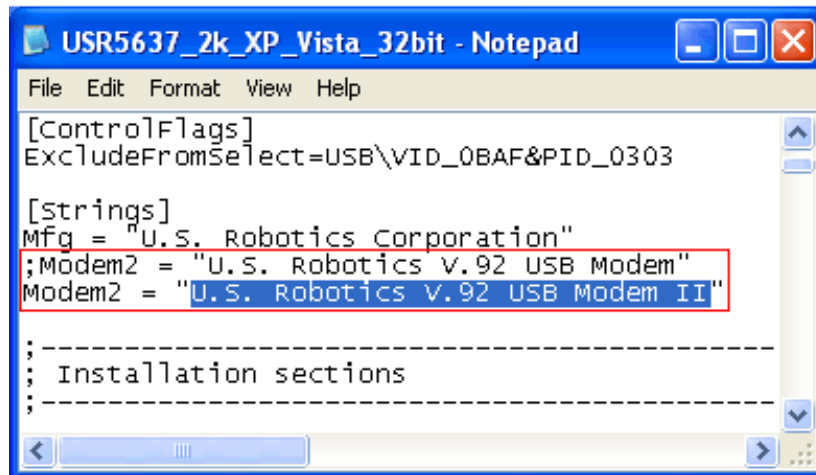
- Connect the modems to computer, and install modems drivers;
- Open **Joyfax Broadcast**, click **Options** button on the toolbar, choose **Fax Devices**, click **Detect Devices...**, only one U.S. Robotics V.92 USB Modem could be found in the devices list;
- Click **Exit** on **File** menu to quit Joyfax Broadcast;
- Right-click **My Computer**, click **Properties**, click the **Hardware** tab, and then click **Device Manager**, double-click **Modems**:



*Modems which name contains a # character that cannot be recognized with Joyfax Broadcast;*

- In order to fix this problem you have to update the Modem drivers manually. To prepare for updating modem drivers:
  - [Click here](#) to download the latest release drivers: i.e: USR5637-2kXpVista32-bit.exe;
  - Extract the drivers to **C:\USR\5637**, double-click the **USR5637\_2k\_XP\_Vista\_32bit.inf** file to open with **Notepad**;
  - Replace the string **Modem2 = "U.S. Robotics V.92 USB Modem"** as **Modem2 = "U.S. Robotics V.92 USB Modem II"** (The string name may be Modem1PCI, Modem1EXT, Modem1EXTPNP and

Modem1USB etc...);



```
USR5637_2k_XP_Vista_32bit - Notepad
File Edit Format View Help
[ControlFlags]
ExcludeFromSelect=USB\VID_0BAF&PID_0303

[Strings]
Mfg = "U.S. Robotics Corporation"
;Modem2 = "U.S. Robotics V.92 USB Modem"
Modem2 = "U.S. Robotics V.92 USB Modem II"

; -----
; Installation sections
; -----
```

- On **File** menu, click **Save As...**, type "**USR5637\_II.inf**" (Include the inverted commas), click **Save**, and then close Notepad.

- Right-click **U.S. Robotics V.92 USB Modem #2** modem, select **Update Driver**;
- The Hardware Update Wizard will begin: Select **No, not this time**, click **Next**; Select **Install from a specific location(Advanced)** and click **Next**; Select **Don't search. I will choose the driver to install** and click **Next**;
- Windows will show you the current driver that is installed for the modem. Click **Have Disk**, click on **Browse** to point to **C:\USR\5637**, choose the **USR5637\_II.inf** file, click **Open**, click **OK**;
- Windows will show the selected driver: **U.S. Robotics V.92 USB Modem II**, click **Next** to begin copying the necessary files to your hard drive, click **Finish** to move on;
- Repeat the above steps to update drivers for the **U.S. Robotics V.92 USB Modem #3** modem;
- Now, Joyfax Broadcast can recognize all of your modems!

## How can I improve fax reliability?

In order to get maximum performance and reliability from your fax server, try the followings:

- Use a direct connection from the PSDN to the fax modem; Remove any splitters and other devices in that line.
- **DISABLE YOUR SCREENSAVER.** Some screensavers can be quite cpu intensive and will starve the communication threads from receiving required messages;
- Avoid running other cpu intensive processes while fax sessions are in progress, they will likely starve the communication threads.
- Try different modem baud rates in this order: 9600, 12000 and 14400;
- If you have a cheap winmodem or software modem consider investing in a good quality non-US Robotics controller based modem, please see [this page](#).

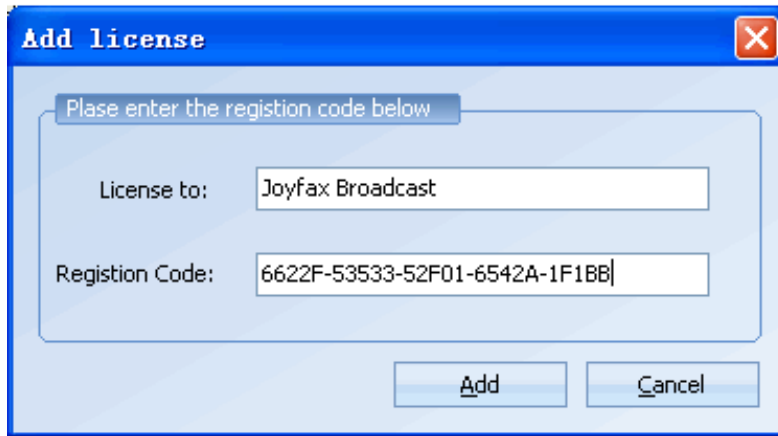


## How to increase the fax quality?

In order to increase the fax quality, try the followings:

- Click **Fax Wizard**, the Fax Broadcasting wizard window will be displayed;
- Click the **Next** button 3 times, in the **Cover Page** section, click **Advance Settings...** button;
- In Fax Printer tab, set Print Quality to **204 x 196 per inch(High)**, click OK;
- Complete the wizard to generate the facsimile again





4. Your registration code now be activated, close the **License Manager** and launch **Joyfax Broadcast** again.

Note: Before registering Joyfax Broadcast, please **ENSURE** that you have the **Full-funtion version** installed

## SOFTWARE LICENSE AGREEMENT

PLEASE READ THE FOLLOWING SOFTWARE LICENSE AGREEMENT CAREFULLY BEFORE YOU PROCEED WITH THE INSTALLATION. YOU ARE ONLY AUTHORIZED TO USE THE SOFTWARE WHEN YOU AGREE WITH THE TERMS OF THE FOLLOWING LICENSE AGREEMENT. BY USING THE SOFTWARE YOU PROFESS TO THE TERMS OF THAT AGREEMENT.

IF YOU DO NOT AGREE WITH THAT LICENSE AGREEMENT YOU EITHER HAVE TO REMOVE THE SOFTWARE FROM YOUR HARD DISK OR YOU HAVE TO RETURN THE COMPLETE SOFTWARE AND GET BACK THE MONEY.

### GRANT OF LICENSE

By paying the license fee the licensee is granted the right to use the software under the following conditions:

**USE:** It is only allowed to use the software on the number of computers that is named in the license agreement. It is not allowed to reassemble or recompile the software, except it is explicit allowed by law.

**COPIES AND MODIFICATIONS:** It is allowed to make copies of the software for archive purposes or when it is necessary to transfer the software to another computer. It is not allowed to make copies of the software for any other purposes.

**OWNERSHIP:** You agree that you have no rights on the software except the right for using the programs as defined in that agreement and the physical media. You know and accept that the software is protected by copyright laws. When you violate this law you can be made liable by the manufacturer.

**ASSIGNMENT OF RIGHTS:** You are allowed to transfer the right of using the software to others when the terms of this agreement are accepted. When you transfer the right for using that software you are no longer allowed to use the software.

**SUBLICENSES:** You are not allowed to borrow the software to others or distribute copies of the software. If you plan to redistribute or modify the software you need the assent of the manufacturer.

**EXPIRATION OF THIS AGREEMENT:** When you violate this software license agreement the manufacturer can request the customer to undo that defamation of the agreement. When the customer is not following that request within 30 days the manufacturer can revoke the right for using the software.

**UPDATES AND ENHANCEMENTS:** The customer accepts that there is only six monthes for free updates and enhancements.

### SOFTWARE WARRANTY

**WARRANTY PERIOD:** The manufacturer guaranties for the time of 6 months that the software will work in a manner that the main use of the software is not impaired. This warranty is only valid if you have installed all of the program files correctly. From the current position it is not possible to guaranty that the software is absolutely free of errors. If the software does not work in the desired manner within that warranty period you can ask for replacement or reparation. If it is not possible for the manufacturer to repair the error within a appropriate time the customer can cancel the contract with full return of the money.

**MEDIA:** The manufacturer guaranties for the time of 6 months that the enclosed media are free of material faults. If you detect errors on the media within the warranty period you can order a replacement media from the manufacturer. If it is not possible for the manufacturer to replace the media within a appropriate time the customer can cancel the contract with full return of the money.

**CLAIM OF WARRANTY:** You have to inform the manufacturer at least 30 days after the end of the warranty period to report your claim of warranty.

**LIMITATIONS IN WARRANTY:** There is no warranty that exceeds the above listed terms of warranty. There are no other agreements of any kind. The warranty period is limited to 6 months except otherwise defined by law.

**INDEMNIFICATION AND EXCLUSION OF LIABILITY:** THERE IS NO RIGHT OF INDEMNIFICATION OF ANY KIND AGAINST THE MANUFACTURER OR ANY OF ITS DISTRIBUTION PARTNERS REGARDLESS OF THE REASONS.

This license agreement and the warranty terms only define the conditions between the manufacturer and the customer. Other agreements or warranty terms that are part of the package of other distributors are not practicable.